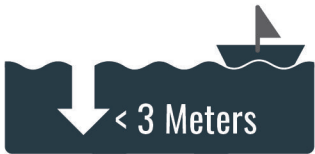


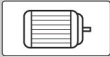


**UNDERWATER PROOF** for salted and chlorinated water



## SPECIFICATIONS e-scrubber +

**Motor:**



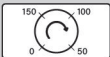
- Brushless DC Motor
- 25 Watt

**Torque:**



- 3,4 Nm; 35 kgs max.
- Spin Stabilization Control

**Adjustable Speed / RPM:**



- 150 rpm
- 100 rpm
- 50 rpm

**Battery:**



- Li-ion 18 650 \* 2 / 2 600 mAh / 7,4 Vdc
- Charge by USB

**Dimension:**

- L 150 mm – W 86 mm – H 70 mm

**Weight:**



- 467 g without accessories

**Safety Certifications:**



- FCC
- IEC 62 133 (built-in battery)
- CE: EN 55 014-1, EN 55 014-2

**EMI:**



- FCC Part 15 B, ICES-003
- Working time: 1 - 3 hours

**Protection:**



- Undervoltage Protection
- Overvoltage Protection
- Overcurrent Protection
- Over-Temperature Protection
- Overtorque Protection
- Protection Against Sticking Motor

**Disposal:**



- WEEE: DE53589000

There are different specifications for our e-scrubber (non water-proof)

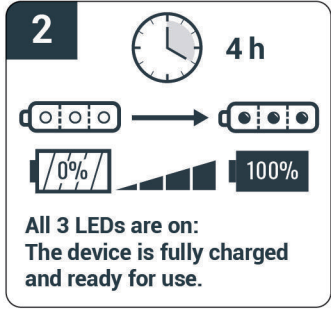
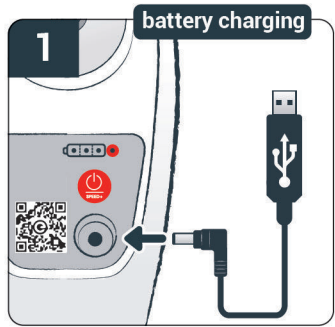
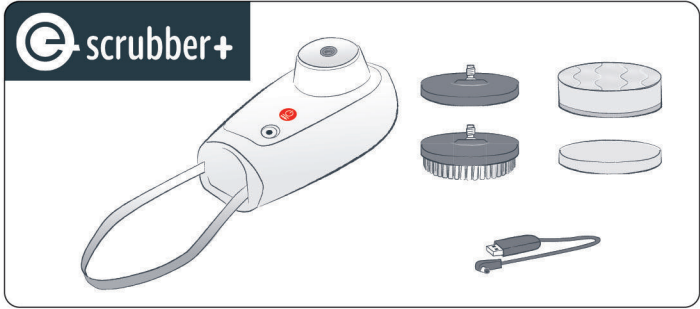


Find out more online: [www.e-scrubber.com](http://www.e-scrubber.com)

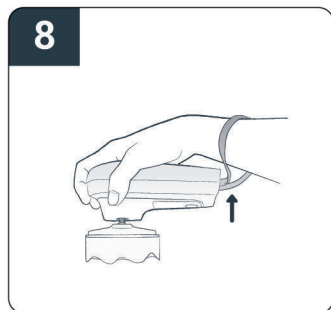
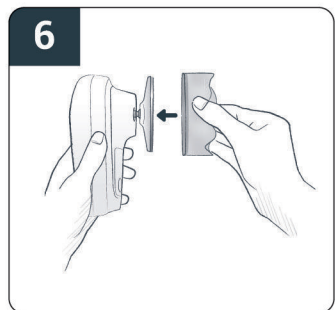
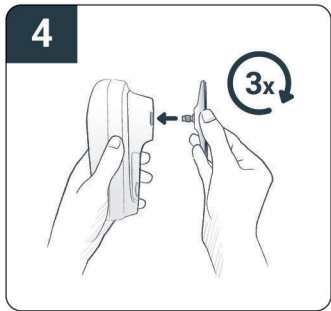
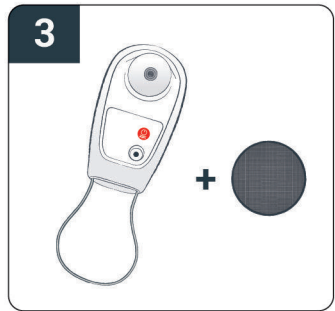


**Power Systems GmbH & Co. KG**  
 Rauheckstrasse 17  
 74232 Abstatt / Germany

Tel.: +49 7062 6759-6  
 Email: [info@e-scrubber.com](mailto:info@e-scrubber.com)



Charging	Using
<p>4 h</p>	<p>1-3 h</p>



**9**

Push & Hold

The red LED lights up

3sec

max. Speed: (150 rpm)	1sec
2/3 Speed: (100 rpm)	1sec
1/3 Speed: (50 rpm)	1sec
Off:	3sec

**10**

0 ~ 13 kgs (150 rpm)

max. Speed: (150 rpm)

2/3 Speed: (100 rpm)

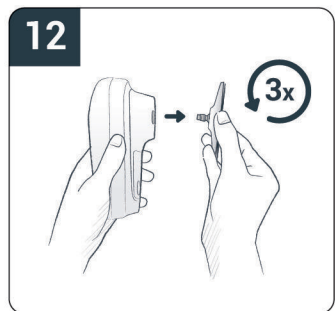
1/3 Speed: (50 rpm)

**11** Cleaning · Reinigung · Limpieza

After using the device in salty water, please rinse it with fresh water.

Nach Gebrauch in Salzwasser, bitte gründlich mit Süßwasser spülen.

Después de su uso en agua salada por favor enjuague con agua dulce.



Maintenance · Pflege · Mantenimiento

Charge every 3 months

Alle 3 Monate laden

Cargar cada 3 meses

5 min

**DANGER!** Read carefully the user manual and all other safety instructions before using this equipment.

**WARNUNG!** Bitte vor der Verwendung des Gerätes die Bedienungsanleitung und alle anderen Sicherheitsanweisungen aufmerksam durchlesen.

**Atención!** Lea detenidamente el manual del usuario y todas las demás instrucciones de seguridad antes de usar este equipo.